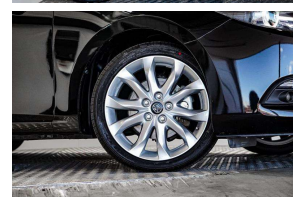
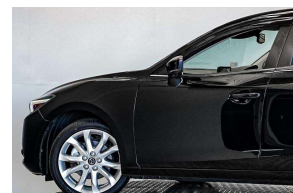


# 2017 Mazda Axela Hybrid L Pack 30kms /



## VEHICLE INFORMATION

### Cash Price

Includes GST

**\$25,380**

+ on-road-costs

Finance this vehicle  
from only

**\$120.62**

per week\*



Gain peace of mind  
with Mechanical  
Breakdown  
Insurance. Ask us  
how.

### Body

4 door, Sedan

### Odometer

30,037 km

### Engine

2000 cc

### Fuel Type

Hybrid

### Transmission

Automatic

### Fuel Saver Rating

-

### VIN

-

### Reg No.

-

### Ext Colour

Black

### History

-

### Seats

5 seats

### Interior

-

### Audio

-

### Stock ID

58525

## Features / Comments

- Super economical and reliable Mazda 3 Limited Sport Hybrid The super popular Mazda Axela Sport with hybrid petrol electric drive train

2017 Mazda Axela Hybrid S Package Sedan  
2000cc Hybrid Perol Electric Motors  
- Running Toyota Prius Hybrid System -

+ Includes our 12 Month Hybrid Battery Warranty +

Very High Spec Mazda 3 Sport Hybrid Sedan:

- Skyactive Technology Engine  
- Front and Side Airbag Protection



Auckland, Phone 0800 443 684, Email [daniel@gvi.kiwi](mailto:daniel@gvi.kiwi)  
575 Great South Road, Penrose, Auckland

\*Finance calculation based on a 48 month term, 25.00% deposit and a and with an example annual fixed interest rate of 12.25%. Actual interest rate may be higher or lower. Includes an establishment fee of \$419 and a monthly maintenance fee of \$8.00. Full term amount payable of \$31,434 (\$25,089 finance + \$6,345 deposit). Estimate only, not an offer of finance. Terms, conditions and lending criteria apply.