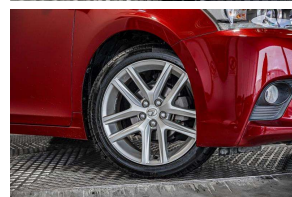
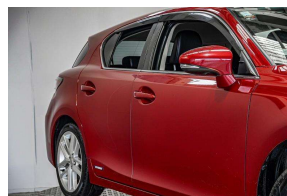


2015 Lexus CT 200h Hybrid / Facelift /



VEHICLE INFORMATION

Cash Price

Includes GST

\$23,380

+ on-road-costs

Finance this vehicle
from only

\$111.46

per week*



Gain peace of mind
with Mechanical
Breakdown
Insurance. Ask us
how.

Body

5 door, Hatchback

Odometer

69,918 km

Engine

1800 cc

Fuel Type

Hybrid

Transmission

Auto

Fuel Saver Rating

3.5 out of 6 stars

VIN

-

Reg No.

-

Ext Colour

Red

History

-

Seats

5 seats

Interior

-

Audio

-

Stock ID

57841

Features / Comments

- High Spec Facelift Lexus CT200h in Red Luxury Hybrid Hatchback with Premium Black Leather Seats Economy and Performance with Dual Petrol / Electric Motors -

2015 Lexus CT200H Hybrid Version C Facelift
1800cc Petrol Electric Hybrid Automatic

Sports Plus Luxury Check out the options

- 4 x Brand New Tyres Fitted in NZ
- 2015 Facelift Model with updated interior and exterior
- Front and Side Airbag Protection
- Premium Black Leather Seats
- Steering Wheel Audio Controls



Tauranga, Phone 0800 575 672, Email hayden@gvi.kiwi

Corner of Hewletts Rd and Waimarie St, Mount Maunganui, Tauranga, 3118

*Finance calculation based on a 48 month term, 25.00% deposit and a and with an example annual fixed interest rate of 12.25%. Actual interest rate may be higher or lower. Includes an establishment fee of \$419 and a monthly maintenance fee of \$8.00. Full term amount payable of \$29,029 (\$23,184 finance + \$5,845 deposit). Estimate only, not an offer of finance. Terms, conditions and lending criteria apply.